

ABBY CON BRACCIOLI GIREVOLE

Design G. & O. Buratti

SEDIA | CHAIR

2022



ABBY CON BRACCIOLI GIREVOLE

Design G. & O. Buratti

SEDIA | CHAIR

2022

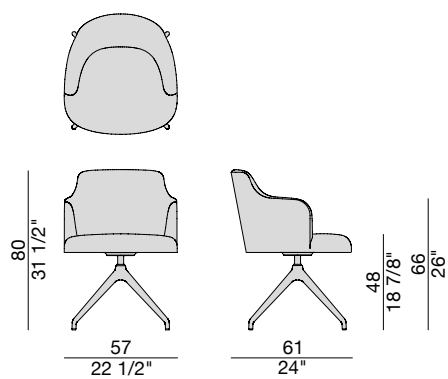
Sedia con braccioli con basamento in metallo girevole a quattro razze. Rivestimento nei tessuti della collezione.

Chair with armrests with four-spoke swivel metal base and cover in the fabrics of the collection.

Stuhl mit Armlehnen mit drehbarem Metallfuß mit vier Speichen und Bezug aus den Stoffen der Kollektion.

Chaise avec accoudoirs avec base métallique pivotante à quatre branches et revêtement dans les tissus de la collection.

Silla con brazos con base de metal giratoria de cuatro radios y revestimiento en las telas de la colección.



ABBY CON BRACCIOLI GIREVOLE

Design G. & O. Buratti

SEDIA | CHAIR

2022



ABBY CON BRACCIOLI GIREVOLE

Design G. & O. Buratti

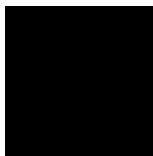
SEDIA | CHAIR

2022

Metallo | Metal



Cromato
Chromed



Nero opaco
Matt black

ABBY CON BRACCIOLI GIREVOLE

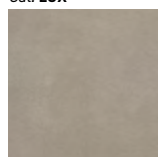
Design G. & O. Buratti

SEDIA | CHAIR

2022

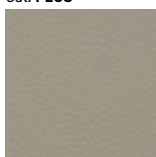
Pelle | Leather

Cat. LUX



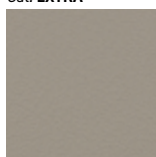
Nabuk

Cat. PLUS



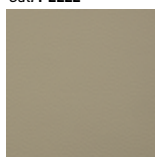
Pelle PLUS

Cat. EXTRA



Pelle EXTRA

Cat. PELLE



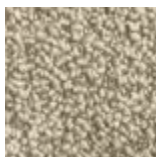
Pelle

Rivestimento | Cover

Cat. A



Twist



Zante

Cat. B



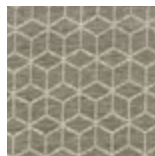
Bouclage



Motley



Tammy



Rabat

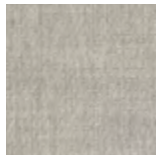
Cat. C



Armam



Ikat



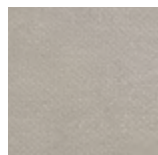
Lint



Loom



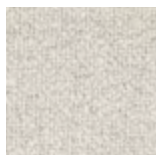
Madras



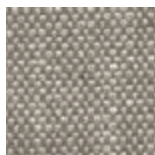
Moleskin



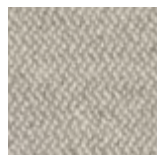
Moran



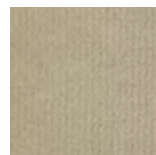
Patch



Silesia

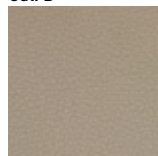


Serge



Velvet

Cat. D



Paros
eco leather

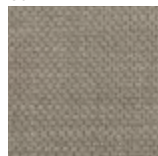


Range

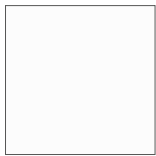


Tress

Cat. E



Dorian



In Bianco/Calico

Cat. COM

Disponibile con tessuto fornito dal cliente.

Available with fabric supplied by the customer.

Verfügbar mit Kundenstoff.

Disponibile avec tissu du client.

Disponibile con tela suministrada por el cliente.